



WESTWOODLEBER

WESTWOODLEBER
LET US GUIDE YOU HOME

Eastwood Barns, Elbow Lane, Hertford Heath, SG13 7QA

£599,995



Eastwood Barns, Elbow Lane, Hertford Heath, SG13 7QA

OFFERED CHAIN FREE!

Westwood Leber are delighted to bring to the market this deceptively spacious two double bedroom barn conversion home offering well designed accommodation reaching approximately 1200 square feet. This fabulous property has two en-suites, off street parking, a study, ground floor w/c and a truly magnificent open plan kitchen/sitting room with bi-folding doors leading out to a low maintenance private garden.

East Wood Barns are set within a picturesque gated development, enclosed by private grounds which beautifully adjoin to open countryside and woodland on all sides. An internal viewing is highly recommended!

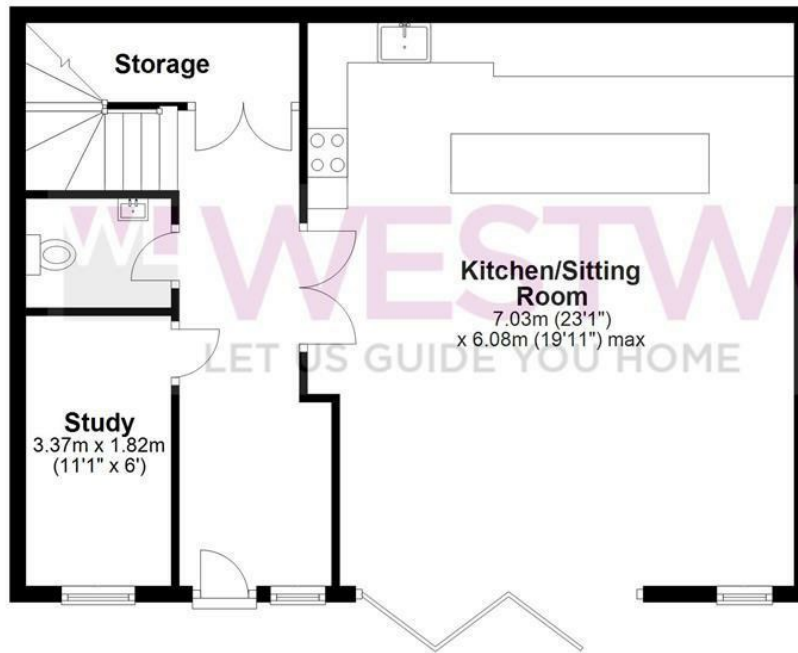


WESTWOODLEBER

WESTWOODLEBER
LET US GUIDE YOU HOME

Ground Floor

Approx. 67.5 sq. metres (726.3 sq. feet)



First Floor

Approx. 42.7 sq. metres (459.1 sq. feet)



Total area: approx. 110.1 sq. metres (1185.4 sq. feet)

FOR ILLUSTRATIVE PURPOSES ONLY. NOT TO SCALE. Whilst every attempt had been made to ensure the accuracy of the floor plan shown, all measurements, positioning, fixtures, features, fittings and any other data shown are an approximate interpretation for illustrative purposes only and are not to scale. No responsibility is taken for any error, omission, miss-statement or use of data shown. Property marketing provided by Westwood Leber.
Plan produced using PlanUp.









